

MINISTERIO PARA LA TRANSICIÓN  
ECOLÓGICA Y EL RETO DEMOGRÁFICO

Dirección General de Sostenibilidad de la Costa y del Mar  
Servicio Provincial de Costas en Huelva

PLANO DELIMITACIÓN PROVISIONAL DEL DOMINIO PÚBLICO  
Y DE LA ZONA DE SERVIDUMBRE DE PROTECCIÓN

TRAMO:

BRAZO ARENOSO EXISTENTE ENTRE LA DESEMBOCADURA DEL RÍO GUADALQUIVIR  
Y LA ZONA URBANA DE MATALASCAÑAS

TÉRMINO MUNICIPAL DE: ALMONTE

PLANO Nº	HOJA Nº	PLANO:	REFERENCIA	Nº EXPEDIENTE
2	722600-4092850	Delimitaciones Provisionales	DES01/07/21/0006	

HOJAS MAPA TOPOGRÁFICO NACIONAL 1:50.000

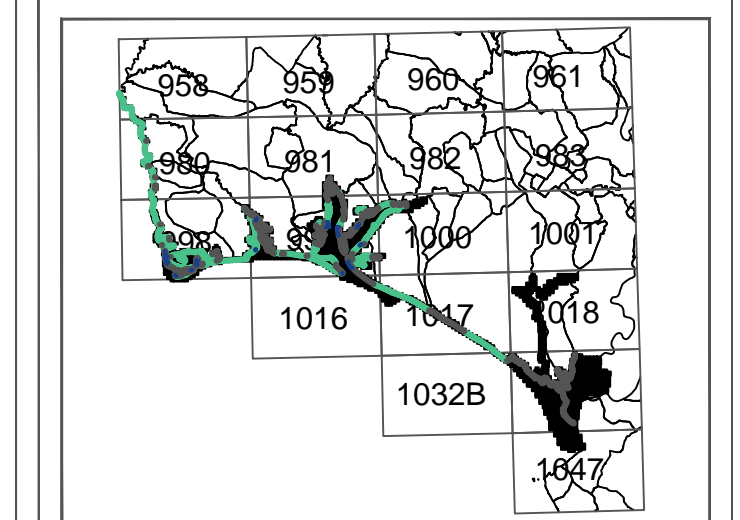
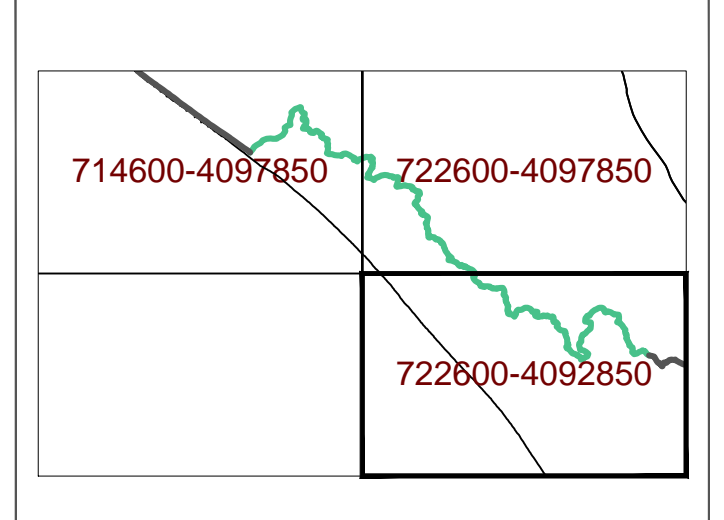


GRÁFICO DE DISTRIBUCIÓN DE HOJAS 1:10.000

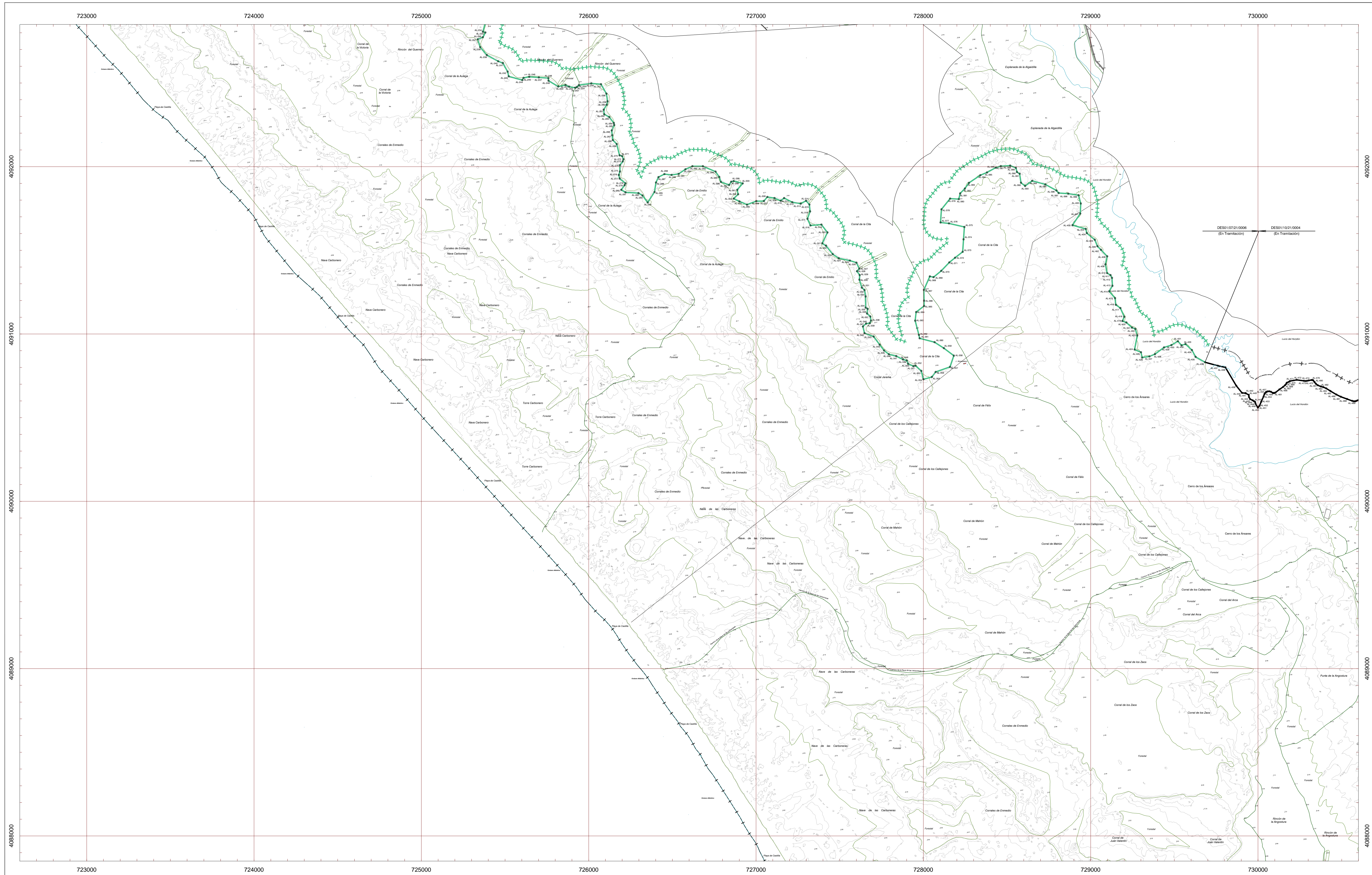


SIGNOS CONVENCIONALES PARTICULARES

	LÍNEA DE MAR - COSTA		LÍNEA DE OTROS DESLINDES		HITOS DESLINDE
	LÍNEA DE DESLINDE D.P.M.T.		LÍMITE DE TÉRMINO MUNICIPAL		S.U.
	LÍNEA DE RIBERA DEL MAR		LÍMITE PARCELAS CATASTRALES		S.N.U.
	LÍNEA DE TRANSITO		LÍMITE POLIGONO CATASTRAL		S.N.U.
	LÍNEA DE LÍMITE DE PROTECCIÓN		LÍMITE ZONA URBANA - RUSTICA		

SI COINCIDE EL DOMINIO PÚBLICO CON LA RIBERA DEL MAR, SE GRAFICA EL DOMINIO PÚBLICO  
SI COINCIDE EL DOMINIO PÚBLICO CON LA Z.M.T. ANTERIOR A LA LEY DE C.23/88, SE GRAFICA EL DOMINIO PÚBLICO

VERTICES DE LA POLIGONAL DEL DESLINDE			VERTICES DE LA POLIGONAL DEL DESLINDE		
Num	X	Y	Num	X	Y
AL-234	725367.4182	409285.8273	AL-336	727863.9660	409122.1802
AL-235	725362.4378	409281.2034	AL-337	727862.6689	409114.0711
AL-236	725362.5155	409279.2032	AL-338	727862.9599	409109.3828
AL-237	725338.4208	409276.6889	AL-339	727879.9961	409104.2268
AL-238	725325.5273	409274.8887	AL-340	727862.8272	409102.2022
AL-239	725327.2778	409286.7890	AL-341	727862.9178	409108.0332
AL-240	725458.6488	409283.3538	AL-342	727868.2228	409104.3901
AL-241	725515.6587	409287.2522	AL-343	727862.8272	409108.0332
AL-242	725663.2314	409287.1528	AL-344	727738.7075	409098.0554
AL-243	725663.5228	409283.3538	AL-345	727734.9624	409098.0941
AL-244	725664.4781	409283.3538	AL-346	727735.9695	409097.6123
AL-245	725701.7048	409283.3538	AL-347	727862.8272	409097.6123
AL-246	725758.8725	409283.3538	AL-348	727878.1415	409087.3341
AL-247	725815.6587	409283.3538	AL-349	727862.8272	409087.4655
AL-248	725872.4449	409283.3538	AL-350	727862.8272	409081.8120
AL-249	725929.2311	409283.3538	AL-351	727862.8272	409079.7554
AL-250	725986.0173	409283.3538	AL-352	727862.8272	409079.7554
AL-251	726042.8035	409283.3538	AL-353	727862.8272	409079.7554
AL-252	726099.5897	409283.3538	AL-354	728000.1197	409078.9812
AL-253	726156.3759	409283.3538	AL-355	728000.1197	409078.9812
AL-254	726213.1621	409283.3538	AL-356	728000.1197	409078.9812
AL-255	726269.9483	409283.3538	AL-357	728158.9914	409062.9928
AL-256	726326.7345	409283.3538	AL-358	728158.9914	409062.9928
AL-257	726383.5207	409283.3538	AL-359	728122.1997	409059.2127
AL-258	726440.3069	409283.3538	AL-360	728122.1997	409059.2127
AL-259	726497.0931	409283.3538	AL-361	727977.6769	409073.8429
AL-260	726553.8793	409283.3538	AL-362	727977.6769	409073.8429
AL-261	726610.6655	409283.3538	AL-363	727950.9940	4091079.2479
AL-262	726667.4517	409283.3538	AL-364	727950.9940	4091079.2479
AL-263	726724.2379	409283.3538	AL-365	728004.1197	409167.1551
AL-264	726781.0241	409283.3538	AL-366	728004.1197	409167.1551
AL-265	726837.8103	409283.3538	AL-367	728004.1197	409167.1551
AL-266	726894.5965	409283.3538	AL-368	728004.1197	409167.1551
AL-267	726951.3827	409283.3538	AL-369	728004.1197	409167.1551
AL-268	727008.1689	409283.3538	AL-370	728106.6975	409176.9533
AL-269	727064.9551	409283.3538	AL-371	728106.6975	409176.9533
AL-270	727121.7413	409283.3538	AL-372	728189.2001	409145.3532
AL-271	727178.5275	409283.3538	AL-373	728189.2001	409145.3532
AL-272	727235.3137	409283.3538	AL-374	728238.7320	409165.2415
AL-273	727292.1000	409283.3538	AL-375	728238.7320	409165.2415
AL-274	727348.8862	409283.3538	AL-376	728152.1102	409165.5624
AL-275	727405.6724	409283.3538	AL-377	728152.1102	409165.5624
AL-276	727462.4586	409283.3538	AL-378	728107.7325	409174.2785
AL-277	727519.2448	409283.3538	AL-379	728107.7325	409174.2785
AL-278	727576.0310	409283.3538	AL-380	728211.3689	409185.6263
AL-279	727632.8172	409283.3538	AL-381	728211.3689	409185.6263
AL-280	727689.6034	409283.3538	AL-382	728247.8205	409188.6912
AL-281	727746.3896	409283.3538	AL-383	728247.8205	409188.6912
AL-282	727803.1758	409283.3538	AL-384	728272.1505	409193.7464
AL-283	727859.9620	409283.3538	AL-385	728330.1943	409194.9525
AL-284	727916.7482	409283.3538	AL-386	728330.1943	409194.9525
AL-285	727973.5344	409283.3538	AL-387	728422.7725	409202.2023
AL-286	728030.3206	409283.3538	AL-388	728422.7725	409202.2023
AL-287	728087.1068	409283.3538	AL-389	728552.6296	409180.4426
AL-288	728143.8930	409283.3538	AL-390	728552.6296	409180.4426
AL-289	728200.6792	409283.3538	AL-391	728552.6296	409180.4426
AL-290	728257.4654	409283.3538	AL-392	728552.6296	409180.4426
AL-291	728314.2516	409283.3538	AL-393	728552.6296	409180.4426
AL-292	728371.0378	409283.3538	AL-394	728552.6296	409180.4426
AL-293	728427.8240	409283.3538	AL-395	728552.6296	409180.4426
AL-294	728484.6102	409283.3538	AL-396	728552.6296	409180.4426
AL-295	728541.3964	409283.3538	AL-397	728552.6296	409180.4426
AL-296	728598.1826	409283.3538	AL-398	728552.6296	409180.4426
AL-297	728654.9688	409283.3538	AL-399	728552.6296	409180.4426
AL-298	728711.7550	409283.3538	AL-400	728552.6296	409180.4426
AL-299	728768.5412	409283.3538	AL-401	728552.6296	409180.4426
AL-300	728825.3274	409283.3538	AL-402	728552.6296	409180.4426
AL-301	728882.1136	409283.3538	AL-403	728552.6296	409180.4426
AL-302	728938.9000	409283.3538	AL-404	728552.6296	409180.4426
AL-303	729000.0000	409283.3538	AL-405	728552.6296	409180.4426
AL-304	729060.0000	409283.3538	AL-406	728552.6296	409180.4426
AL-305	729120.0000	409283.3538	AL-407	728552.6296	409180.4426
AL-306	729180.0000	409283.3538	AL-408	728552.6296	409180.4426
AL-307	729240.0000	409283.3538	AL-409	728552.6296	409180.4426
AL-308	729300.0000	409283.3538	AL-410	728552.6296	409180.4426
AL-309	729360.0000	409283.3538	AL-411	728552.6296	409180.4426
AL-310	729420.0000	409283.3538	AL-412	728552.6296	409180.4426
AL-311	729480.0000	409283.3538	AL-413	728552.6296	409180.4426
AL-312	729540.0000	409283.3538	AL-414	728552.6296	409180.4426
AL-313	729600.0000	409283.3538	AL-415	728552.6296	409180.4426
AL-314	729660.0000	409283.3538	AL-416	728552.6296	409180.4426
AL-315	729720.0000	409283.3538	AL-417	728552.6296	409180.4426
AL-316	729780.0000	409283.3538	AL-418	728552.6296	409180.4426
AL-317	729840.0000	409283.3538	AL-419	728552.6296	409180.4426
AL-318	729900.0000	409283.3538	AL-420	728552.6296	409180.4426
AL-319	729960.0000	409283.3538	AL-421	728552.6296	409180.4426
AL-320	730020.0000	409283.3538	AL-422	728552.6296	409180.4426
AL-321	730080.0000	409283.3538	AL-423	728552.6296	409180.4426
AL-322	730140.0000	409283.3538	AL-424	728552.6296	409180.4426
AL-323	730200.0000	409283.3538	AL-425	728552.6296	409180.4426
AL-324	730260.0000	409283.3538	AL-426	728552.6296	409180.4426
AL-325	730320.0000	409283.3538	AL-427	728552.6296	409180.4426
AL-326	730380.0000	409283.3538	AL-428	728552.6296	409180.4426
AL-327	730440.0000	409283.3538	AL-429	728552.6296	409180.4426
AL-328	730500.0000	409283.3538	AL-430	728552.6296	409180.4426
AL-329	730560.0000	409283.3538	AL-431	728552.6296	409180.4426
AL-330	730620.0000	409283.3538	AL-432	728552.6296	409180.4426
AL-331	730680.0000	409283.3538	AL-433	728552.6296	409180.4426
AL-332	730740.0000	409283.3538	AL-434	728552.6296	409180.4426
AL-333	730800.0000	409283.3538	AL-435	728552.6296	409180.4426
AL-334	730860.0000	409283.3538	AL-436	728552.6296	409180.4426
AL-335	730920.0000	409283.3538	AL-437	728552.6296	409180.4426



EXAMINADO Y CONFORME

Jefe del Servicio Provincial  
Firma: Gabriel Jesús Cuena López

ESCALA 1/10.000

EQUIDISTANCIA 5 m.

INFORMACION CARTOGRAFICA

SISTEMA GEODÉSICO DE REFERENCIA: ETRS89  
SISTEMA DE REPRESENTACIÓN CARTOGRAFICA: U.T.M. - HUSO 29  
ORIGEN DE ALTITUDES: NIVEL MEDIO DEL MAR EN ALCANTE  
COORDENADAS U.T.M. ETRS89 EN MARCO DE HOJA  
COTA DEL CLAVO DEL PUERTO HUELVA RESPECTO AL NMM EN ALCANTE: 2.769 m. (2016)

VUELO FOTOGRAMÉTRICO REALIZADO EN JULIO 2015  
AEROTRIANGULACIÓN PROPIA DEL ESTE LEVANTAMIENTO  
APOYO DE CAMPO REALIZADO EN OCTUBRE Y NOVIEMBRE 2015  
RESTITUCIÓN Y EDICIÓN REALIZADO EN 2016

Signos Convencionales Generales

- Puesto madera / Puesto metálico / Antena
- Punto NAP / Punto Nivelación
- Vertice REGENTE / Regente / ROI
- Vertice Topográfico / Punto de Apoyo

Signos Convencionales Particulares

- Línea de mar - costa
- Línea de deslinde D.P.M.T.
- Línea de ribera del mar
- Línea de transito
- Línea de limite de protección
- Línea de otros deslindes
- Límite de termino municipal
- Límite parcelas catastrales
- Límite poligono catastral
- Límite zona urbana - rustica
- ⊗ Hitos deslinde
- S.U. Suelo urbano
- S.N.U. Suelo no urbano