



AIGÜESTORTES I ESTANY DE SANT MAURICI

PARQUE NACIONAL



Estany de Besiberri



Cattle landscape in Llessui's mountains



Estany de la Llosa



Estany dels Barbs



Refuge of the Colomina

visiting the Park

General information

Boi and Espot are the two main entrances and traditional allowing access to Aigüestortes and Sant Maurici Lake, the two most popular places in the Park, to which you can reach on foot from the car parks in these entries, or using 4x4 taxi service, since access to the interior with private vehicles is restricted. All counties surrounding the park have other options to discover places of great interest to lovers of mountain scenery. It will be difficult if you try to know everything in one trip; you shall choose what valley you want to visit.

Visitor Centres

Before beginning your tour, we recommend to spend some time going through any of the visitor centres located at Boi, Espot, Llessui, Estany Gento or Senet. There, you can get information about the most suitable itineraries for your fitness level and the time you have available, as well as the forecast of weather conditions and, in winter, the risk of avalanches. You can also get to know and join in with the activities and guided excursions organised by the Park, and visit our permanent exhibitions. You will also find books, maps, brochures, souvenirs and all the information you require on the Park and the cultural and artistic heritage of its surrounding areas.

Routes

Trails. Walking is clearly the best way to get to know the Park. A large network of footpaths assure you can advance with ease. Remember prudence is essential in mountain zones. Make sure you leave enough time to get back to the exits. There are suitable routes for everyone and even the possibility of crossing the Park over several days, sleeping en route at mountain refuges (these excursions must be booked in advance).

Guided excursions.

If you wish to learn more about this natural space, its animal and plant life, history and anecdotes, join one of our organised excursions led by a guide-interpreter. For this, get in touch with the Houses of the Park and Information Centres.

Recommended routes.

The Park has specific brochures with suggested itineraries for each sector, some even self-guided, available at the Information Centres. You can also inquire about the scenic overlooks located in various locations in the Park

Advice and safety

Get used to wear proper equipment: mountain sports footwear, warm and waterproof clothing and a map of the area. The weather can change very abruptly in the high mountains. The Park can be visited all year round, but remember that it is covered with snow in the winter months. At this time of year, visitors must be extra careful, and find out beforehand about the weather conditions, the state of footpaths and the risk of avalanches. In case of emergency or accident, number 112 is not available sometimes. All the refuges have radio transmitters connected to the Generalitat de Catalunya fire department. The waters of the rivers and springs are not treated to drink. Visitors equipped with binoculars will certainly have the chance, at some point, to observe the different mammals and birds which live in the Park. The villages and people in the area around the Park have jealously preserved its culture, art and age-old customs. A marvellous discovery awaits you

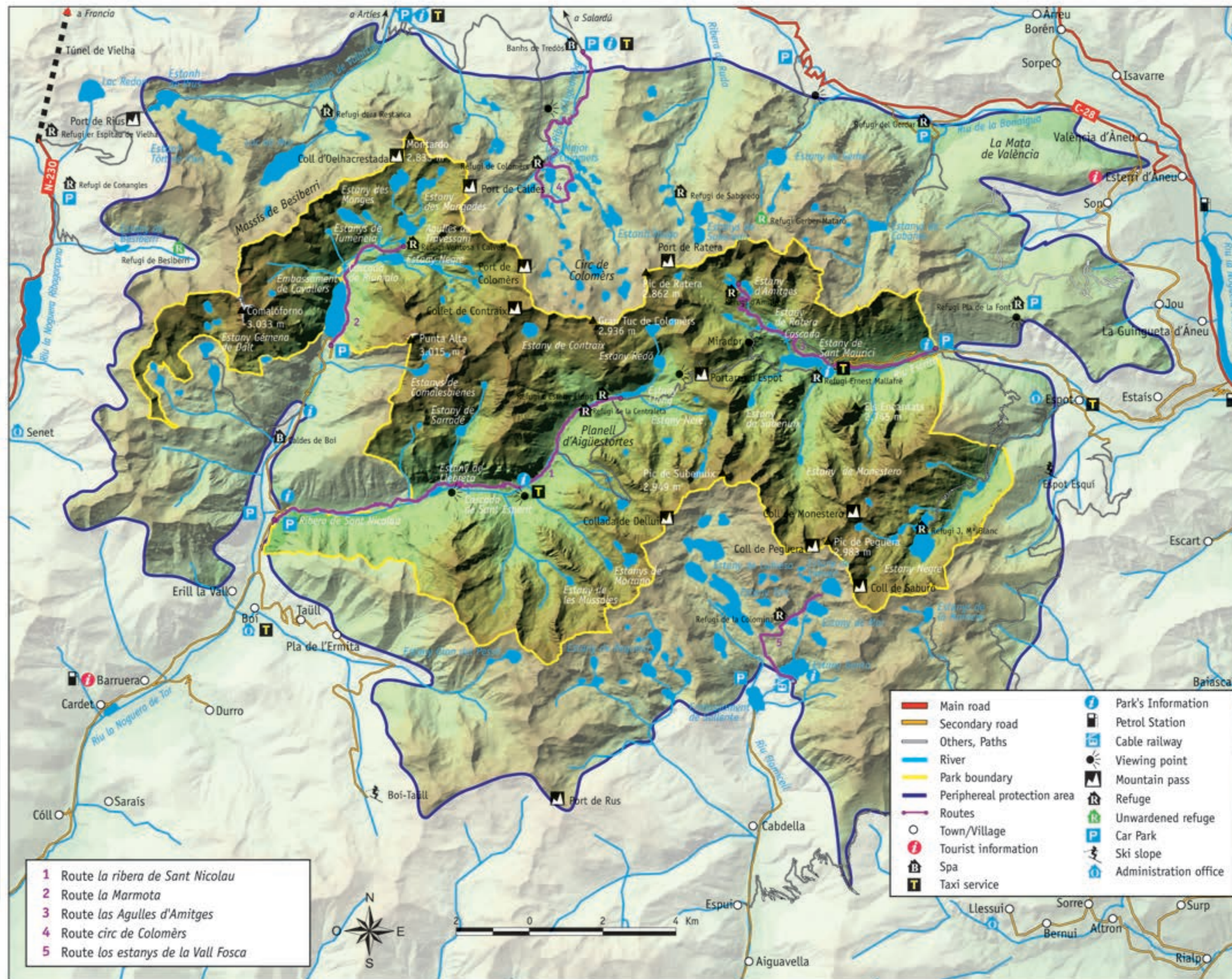
Do not

- Stray off the paths and trails of the Park.
- Cross snowfields or other zones with packed ice or snow.
- Walk on the surface of frozen lakes.
- Wade into rivers, lakes, gullies and waterfalls.
- Get too close to the base of natural rock or ravine walls.
- Walk near precipices, or look through binoculars, film or take photographs near the edges of them.
- Climb or walk near mountain summits without the right equipment or training for each season and level of difficulty.
- Walk through the park outside daylight hours.

Please note that the following prohibitions apply within the Park boundaries:

- No camping or sleeping out
- Do not disturb the animals or pick flowers, fruit or fungi
- No fishing
- No fires
- No bathing
- No hunting
- No loud noises
- All dogs must be kept on a leash
- No rubbish

Edita: Organismo Autónomo Parques Nacionales.
 Ilustraciones: Bernardo Lara.
 Fotografías: Archivo CENEAM y Parc Nacional d'Aigüestortes i Estany de Sant Maurici.
 Cartografía: TRAGSA.
 D.L.: M-14599-2014
 NIPO: 293-14-005-1
 Imprime: A.G.S.M. S.A.
 Impreso en papel reciclado.



Map of Aigüestortes i Estany de Sant Maurici National Park

For any further information related to the paths, ask in the Park Information Centres



Generalitat de Catalunya



PARQUE NACIONAL
 ESTANY DE SANT MAURICI
 AIGÜESTORTES I

Identification data

Name: AIGÜESTORTES I ESTANY DE SANT MAURICI
 Protection Category: National Park
 Autonomous Region: Catalonia
 Province: Lleida
 Surface Area: 14,119 hectares
 Longitude: 0° 56' 25" E
 Latitude: 42° 34' 14" N
 Created: 21 October 1955

addresses

House of the Park at Boi
 Ca de Simamet, Les Graieres Street, 2. 25528 Boi
 Tel. No.: 973 696 189. Fax: 973 696 154
 House of the Park at Espot
 Sant Maurici Street, 5. 25597 Espot
 Tel./Fax No.: 973 624 036
 Information Centre at Llessui
 Shepherds' of the Assua Valley Eromuseum
 Antiques Escolles, s/n. 25567 Llessui
 Tel. No.: 973 621 798. Fax: 973 621 803
 Information Centre at Estany Gento
 (openend only in summer) Tel. No.: 618 957 726
 Information Centre at Senet. La Serradora
 El Port Street, 10. 25553 Senet
 Tel. No.: 973 698 232. Fax: 973 698 229
 Internet and email addresses:
 www.gen.cat.cat/parcs/aiguestortes/es/
 http://reddeparquesnacionales.mma.es/parques/aiguestortes
 info.aiguestortes@oapn.es
 To receive regular updates by email:
 pnaiguestortes@gen.cat

diplomas

- 1988 Special Protection Area for Birds
- Space of the Network Nature 2000
- Included in the international list of the agreement Ramsar
- EMAS
- Q Tourist Quality

