

Public information strategies in ozone episodes



Patricia de la Viesca Cosgrove

Air quality technician

pdelaviesca@gencat.cat

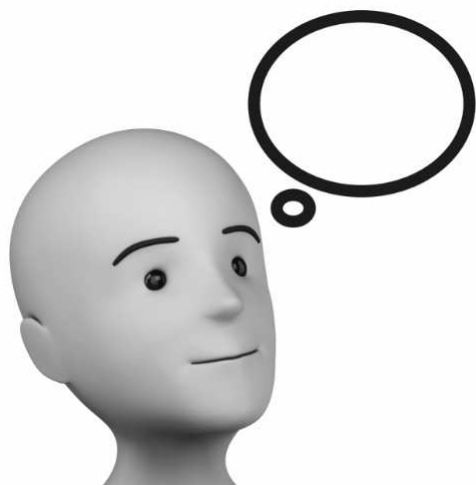
November 22, 2018



**Generalitat
de Catalunya**

Informing procedure when information or alert threshold is exceeded:

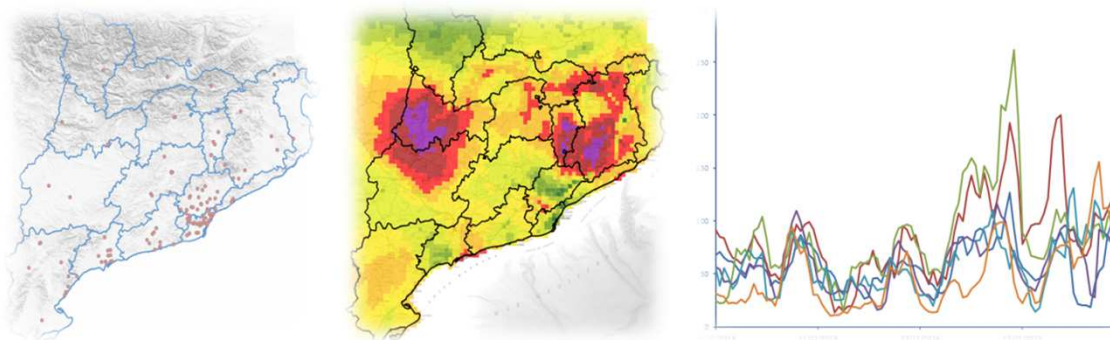
Objective?



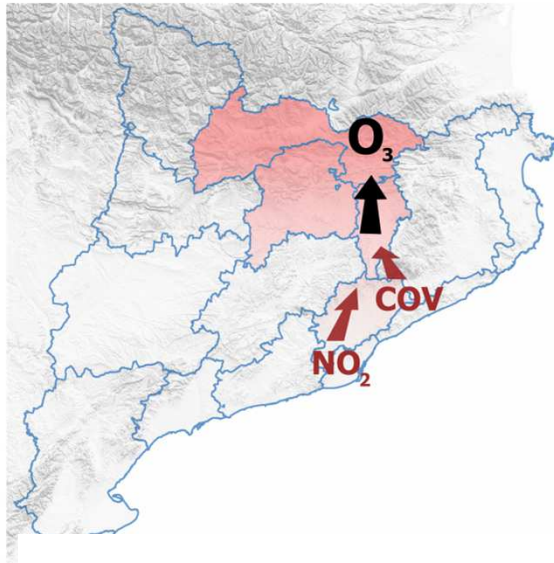
All the population, especially sensitive collectives should receive the information for self-protection

Campaign for monitoring tropospheric ozone:

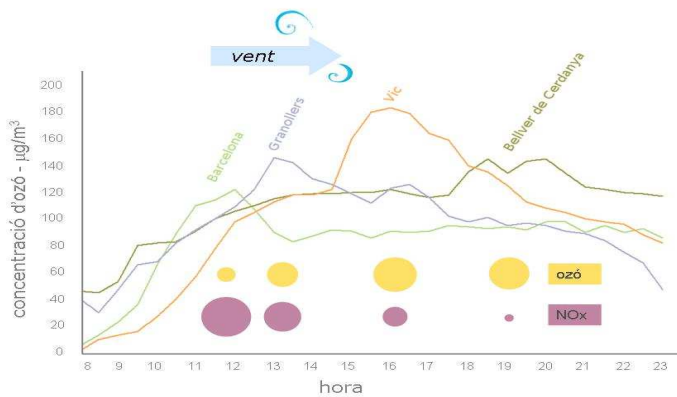
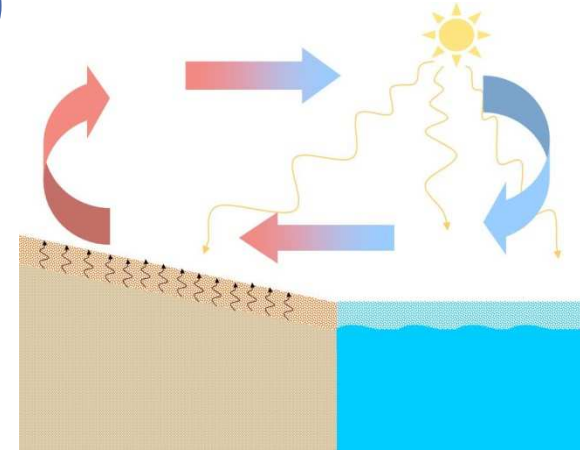
From May to September a special surveillance of tropospheric ozone will be carried out, with real-time control of the levels measured at stations. If the information threshold or alert threshold is exceeded, an **informing procedure** is triggered and recommendations are made to the sensitive population.



Ozone evolution in Catalonia (AQZ Plana de Vic)

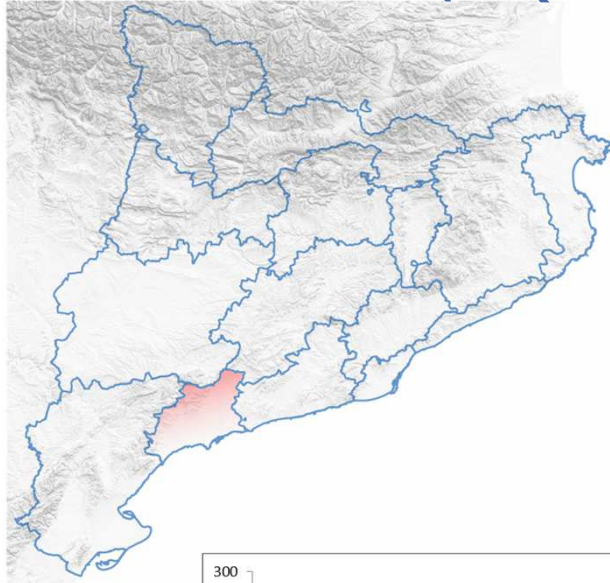


The highest concentrations are usually registered in summer **afternoons** in anticyclonic situations

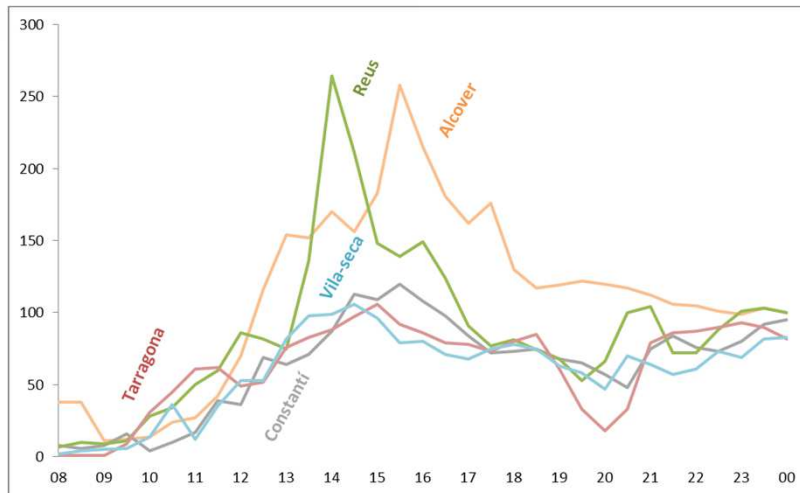
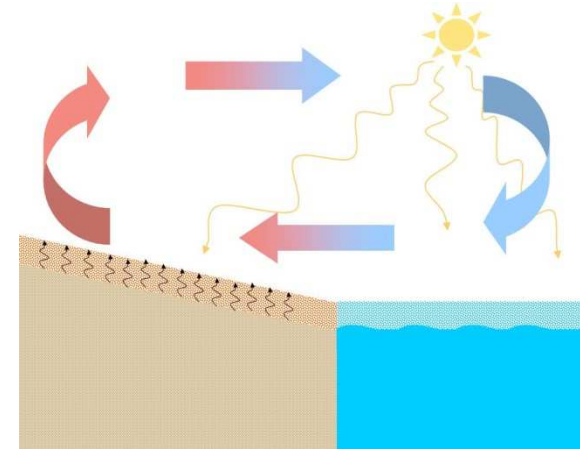


See breeze can transport ozone inland several kilometers and cause the increase of ozone levels in rural areas

Ozone evolution in Catalonia (AQZ Camp de Tarragona)



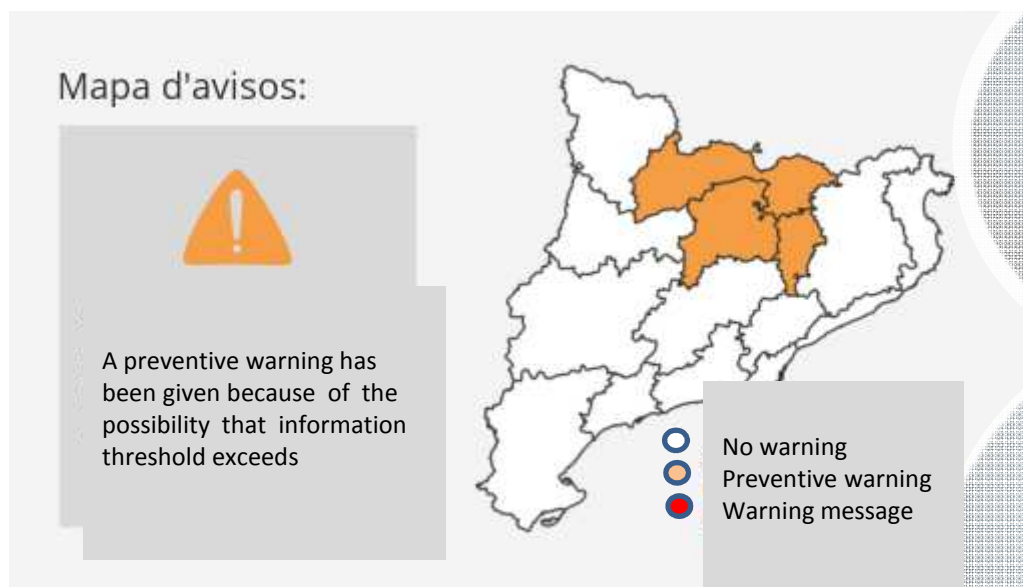
The highest concentrations are usually registered at **noon**



The sea breeze can transport ozone inland several kilometers and cause the increase of ozone levels in rural areas

Preventive warning of high levels of ozone

It is carried out if it is predicted that there will be high levels of tropospheric ozone



When?
Before **noon**

How?
Through all diffusion channels available

What is reported?
The affected air quality area, the threshold that could be exceeded and the actions to be taken

Warning message when exceeding the information or alert threshold

It is carried out if the information or alert threshold has been exceeded

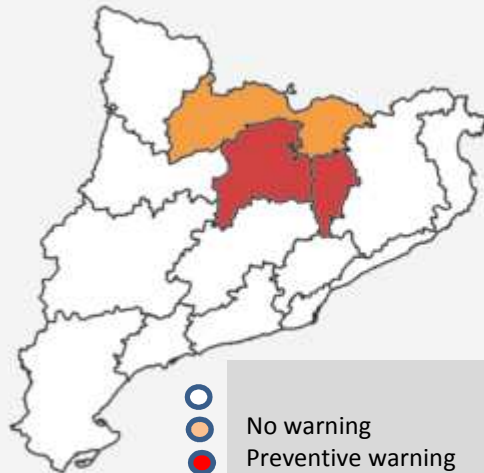
Information: > 180 $\mu\text{g} / \text{m}^3$ in one hour




Alert: > 240 $\mu\text{g} / \text{m}^3$ in one hour

Mapa d'avisos:



The information threshold has exceeded
(180 $\mu\text{g}/\text{m}^3$ in 1 hour)



-  No warning
-  Preventive warning
-  Warning message

When?

The hour after it exceeds the limit

How?

Through all diffusion channels available

What is reported?

The monitoring site and the air quality zone affected

The threshold that has been exceeded

The duration of the episode and the maximum hourly value reached

The expected evolution

INFORMATION CIRCUIT

STEP 1

GENERALITAT



Department of Territory and Sustainability sends reports to Local Authorities



Mass Media



E-mail: vigilancia_ozo@gencat.cat



website: mediambient.gencat.cat/campanyaozo



@mediambientcat #ozó2018



Preventive warning

When high levels of tropospheric ozone are predicted
Before 12 am



Recommendations:
Sensitive population should reduce intense physical exercise especially outdoors

Warning message

Information threshold (>180µg/m³ in 1 hour)
Alert threshold (LLI) (>240µg /m³in 1 hour)
The hour just after the exceedance occurs (LLA)



Recommendations:
LLI: Sensitive population should reduce intense physical exercise especially outdoors
LLA: Sensitive population should avoid intense physical exercise especially outdoors and that the general population reduces the intense physical exercise also outdoors



STEP 2

LOCAL
AUTHORITIES



Local authorities spread the information to the citizens



Recommended Mass Media

In case of preventive warning or warnign alert message:

- municipal websites
- social networks
- public voice announcements
- radio stations and TV channels
- informative panels
- e- mails



Informative campaign:

- Distribution of flyers from May to September
- local nesletter
- posters
- talks

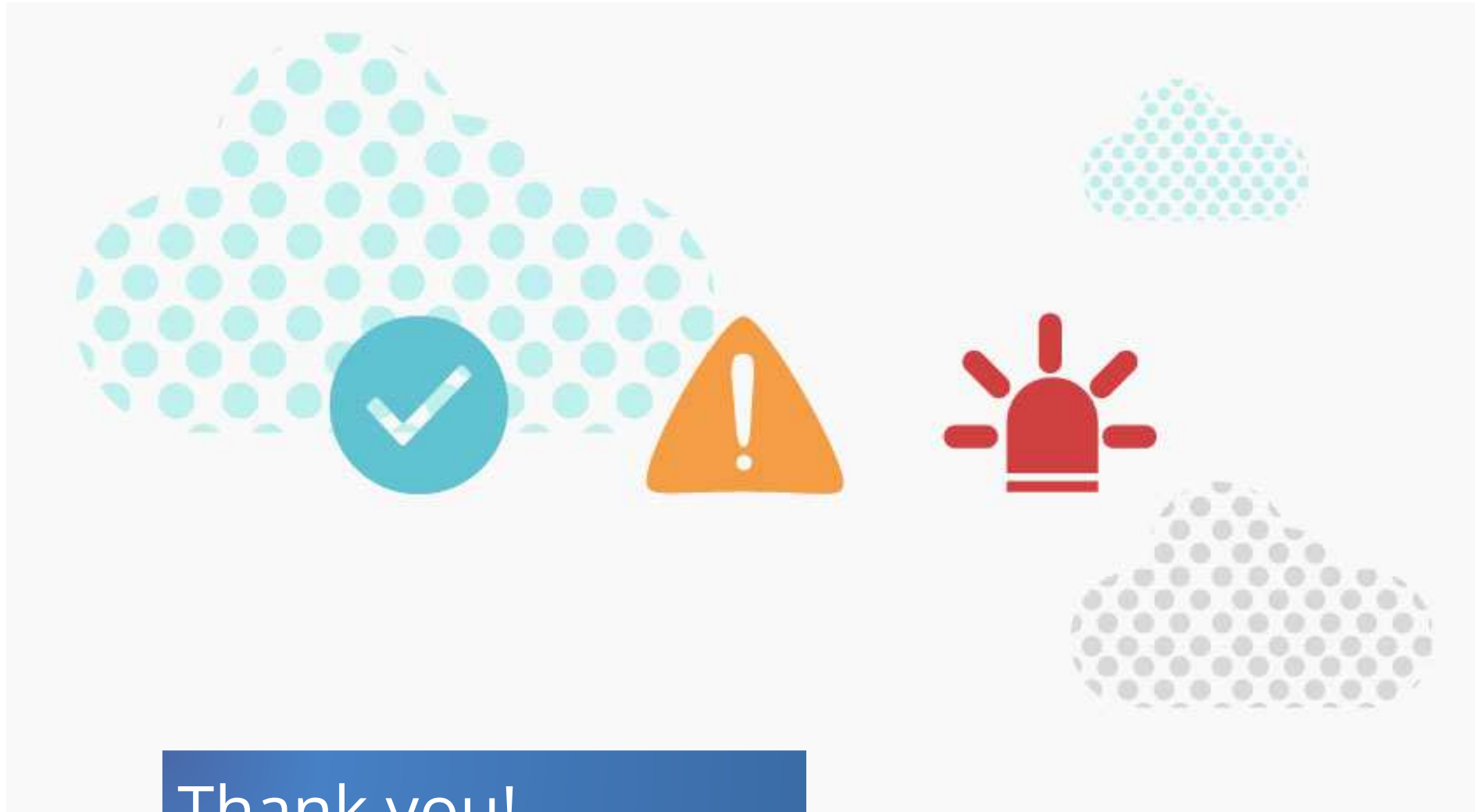


Final recipients

Especially sensitive collectives and entities

- community centers for the elderly people
- summer camps and recreations
- residences of elderly people
- nursery school and educational centers
- sport centers
- touristic information offices
- neighbors in general





Thank you!