



GOBIERNO
DE ESPAÑA

MINISTERIO
DE AGRICULTURA, ALIMENTACIÓN
Y MEDIO AMBIENTE



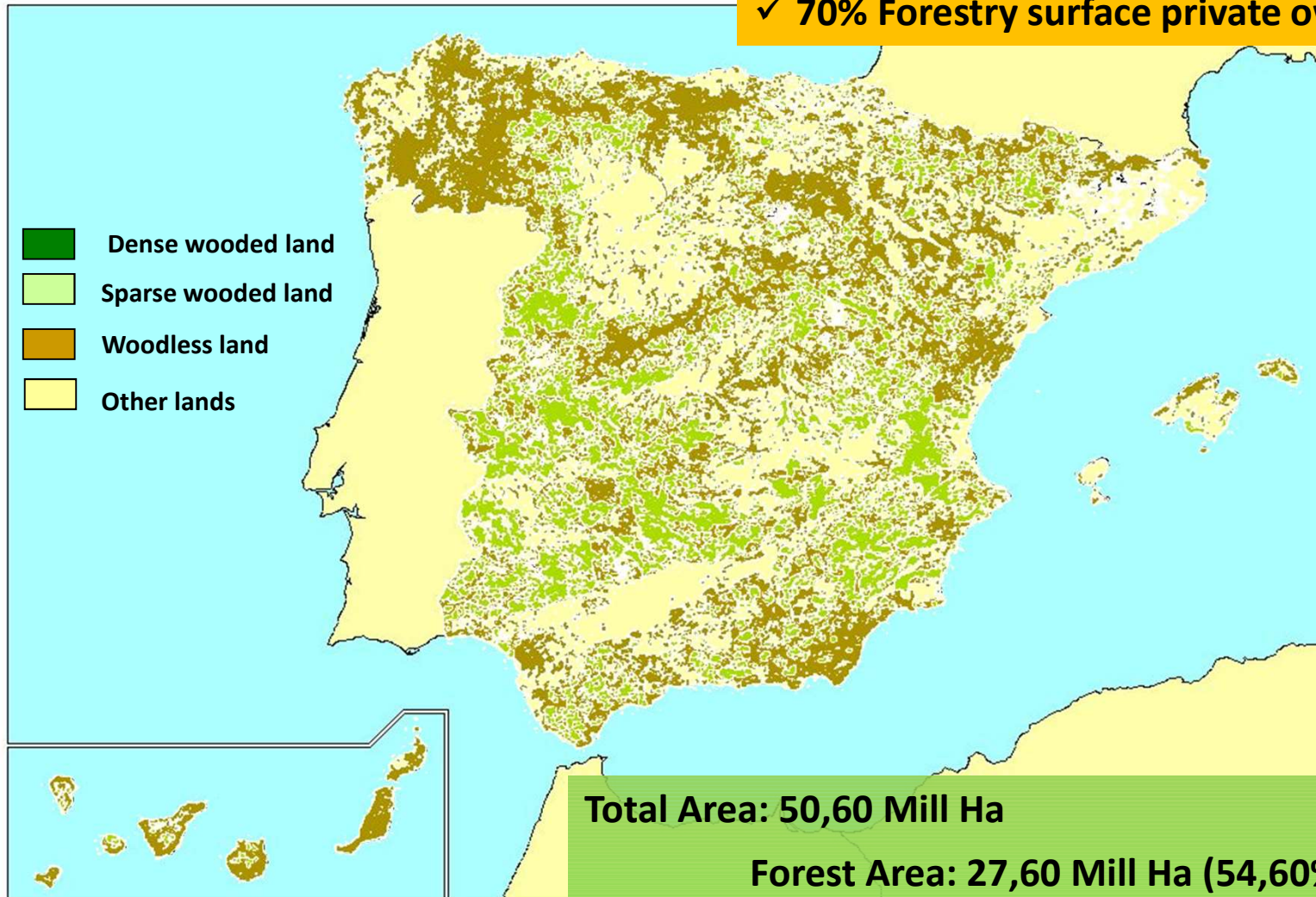
SAFETY IMPROVEMENTS
COLLABORATIVE APPROACH
Wildland Firefighting Committee
SPAIN

Elena Hernandez, Service Manager. Spanish Forest Fire Service



SPANISH FOREST LANDS

- ✓ 40% Forestry surface protected
- ✓ 70% Forestry surface private owners



Total Area: 50,60 Mill Ha

Forest Area: 27,60 Mill Ha (54,60%)

- Wooded land: 18,6 Mill Ha (67,39%)

- Woodless land: 9 Mill Ha (32,61%)



- ✓ Mediterranean country
- ✓ Sahara heat waves
- ✓ Second mountainous country in Europe

STATISTICS OF LAST DECADE (2005-2014)

15 638 wildfires/year

117 033 hectares/year

2 HIGH RISK PERIODS

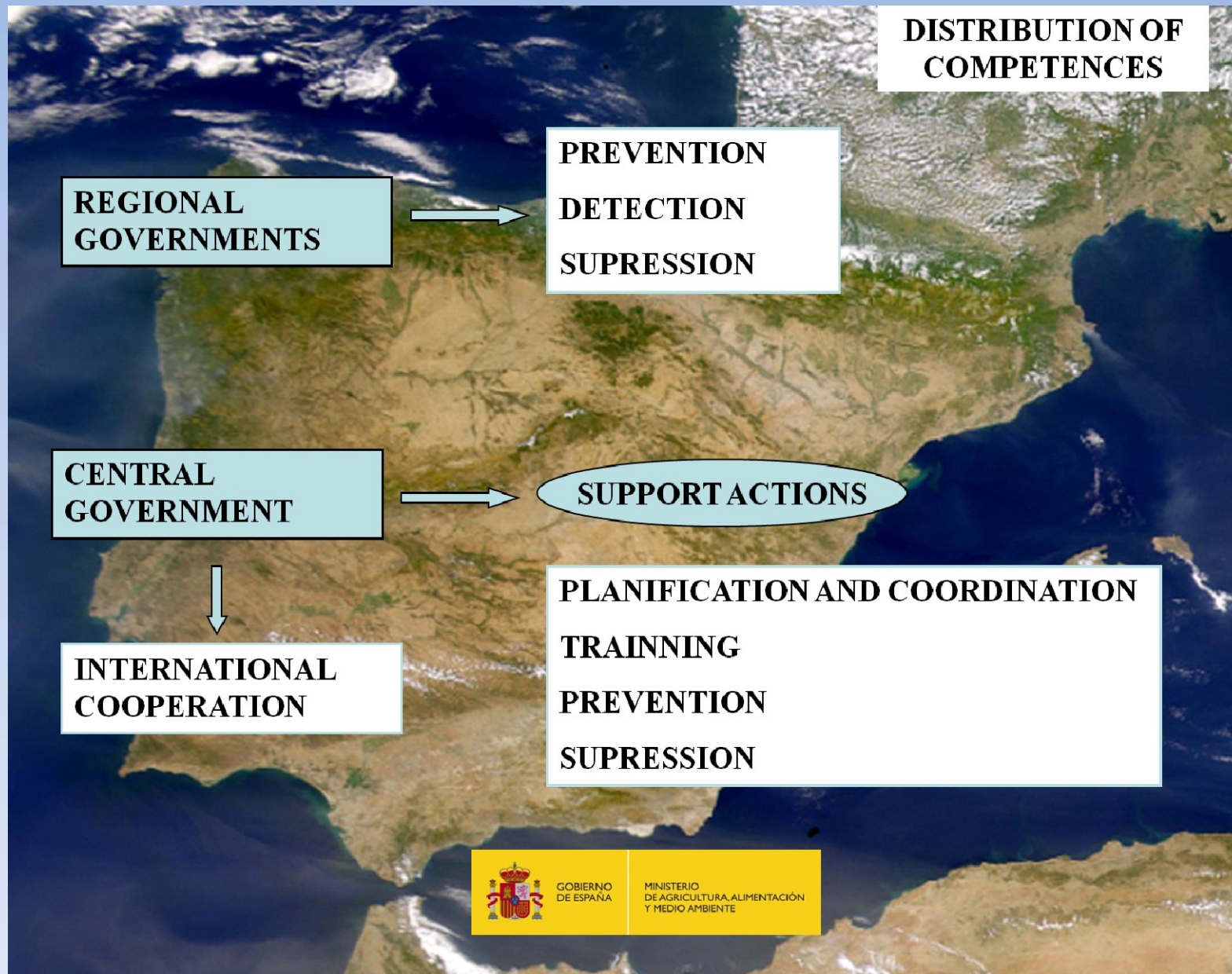
- Winter – spring (north-west)
- Summer (all country)



17 REGIONS (SELF GOVERNING COMMUNITIES)
2 CITIES (SELF GOVERNING CITIES)

DECENTRALIZED
COUNTRY







COORDINATION

WILDLAND FIREFIGHTING COMMITTEE (WFC)

- Created in 1994
- Technical level. Twice a year
- General consent

WORKING GROUPS

1. Aerial resources deployment
2. Prevention
- 3. Supression Safety (2009)**
4. Aerial coordination
5. Certification of Training and Emergency Management System (ICS)
6. Information



SUPPRESSION SAFETY WORKING GROUP

2009. Risk evaluation in wildfire related activities (National Occupational Safety and Health Commission) → 31 proposals

8 WORK LINES

- Engines and dozers. Specific solutions for a safety and efficiency use
- Personnel selection criteria review (2002)
- Shift hours recommendation (limits, breaks...)
- Incident and accidents reports + Safety database
- Specific safety protocols develop
- Meteorological forecast tools
- Communication channel for emergencies in wildfires
- Training standards for different positions



SUPPRESSION SAFETY WORKING GROUP

Personnel selection criteria review (2002)

Final draft under review

PART 1. HEALTH

Basic criteria for medical tests

Questionnaires, certifications, authorizations models

PART 2. PHYSICAL APTITUDE

Valid physical tests (pack test, field test, walk test, course navette, bench)

PART 3. PSYCHOLOGICAL CONDITION

Evaluation factors

PART 4. HIRING PROCESS

Basic criteria (age, previous experience...)

Complementary tests (knowledge test, personal interview, practical test...)



SUPPRESSION SAFETY WORKING GROUP

Work day / break shift recommendation (2013)

- Urban firefighters and emergency personnel excluded
- Ordinary working shift = max 12 hours
- Ordinary break between consecutive shifts → min 12 hours
- In case of emergency:
 - 12 hours of work in suppression → 14 hours max
 - 12 hours break → 10 hours min

In accordance with all labor standards/regulations



SUPPRESSION SAFETY WORKING GROUP

Incident and accidents report. Safety database

- Development and adoption of safety report model. Data since 2011.
- Data base under development (funding)
- Lessons Learnt (web page)
- STOP (6 minutes for safety) (web page)
- **Accident investigation → Technical investigation commission under the WF Committee.** Accident report in 2011.



SUPPRESSION SAFETY WORKING GROUP

Other actions

- Technical recommendation on **self-protection maneuver for engines** + video (Final draft under review)
- Update of the Technical recommendation on **Personal Protective Equipment** (2013)
- Update of Technical recommendation on **complementary equipment and tools** (Final draft under review)
- Training standards for positions → Certification of Training and Emergency Management System (ICS) since 2010



GOBIERNO
DE ESPAÑA

MINISTERIO
DE AGRICULTURA, ALIMENTACIÓN
Y MEDIO AMBIENTE



THANK YOU FOR YOUR ATTENTION

ehparedes@magrama.es